



Three cases of gastrointestinal stromal tumors with metaiodobenzylguanidine (MIBG) accumulation

| | |
|-------|---|
| メタデータ | <p>言語: English</p> <p>出版者: The Fukushima Society of Medical Science</p> <p>公開日: 2025-04-23</p> <p>キーワード (Ja):</p> <p>キーワード (En): gastrointestinal stromal tumor (GIST), metaiodobenzylguanidine (MIBG), Humans, Gastrointestinal Stromal Tumors, 3-Iodobenzylguanidine, Male, Female, Middle Aged, Aged, Radiopharmaceuticals, Radionuclide Imaging, Adult</p> <p>作成者: Kobiyama, Honami, Ishii, Shiro, Saito, Yumi, Kawamoto, Natsumi, Sugawara, Shigeyasu, Ito, Hiroshi</p> <p>メールアドレス:</p> <p>所属:</p> |
| URL | <p>https://fmu.repo.nii.ac.jp/records/2002376</p> |

[Case Report]



Three cases of gastrointestinal stromal tumors with metaiodobenzylguanidine (MIBG) accumulation

Honami Kobiyama, Shiro Ishii, Yumi Saito, Natsumi Kawamoto,
Shigeyasu Sugawara and Hiroshi Ito

Department of Radiology and Nuclear Medicine, Fukushima Medical University

(Received January 24, 2024, accepted October 9, 2024)

Abstract

Meta-iodobenzylguanidine (MIBG) is an analog of norepinephrine and guanethidine, and MIBG scintigraphy is useful to diagnose tumors of the sympathetic nervous system, such as pheochromocytoma, paraganglioma, and neuroblastoma. To date, there have been few reports of MIBG accumulation in gastrointestinal stromal tumors (GISTs), so the mechanism and frequency of MIBG accumulation in GISTs are unknown. Herein, we report and discuss three cases of GIST in which scintigraphy that was performed to exclude pheochromocytoma showed MIBG accumulation.

Key words : gastrointestinal stromal tumor (GIST), metaiodobenzylguanidine (MIBG)

Introduction

Metaiodobenzylguanidine (MIBG) accumulates in tumors derived from the adrenal medulla and sympathetic ganglia, and is useful in the localization of pheochromocytoma, neuroblastoma, medullary thyroid carcinoma, and carcinoid. To date, there have been few reports of MIBG accumulation in gastrointestinal stromal tumors (GISTs). We herein report and discuss three cases of MIBG accumulation in GISTs.

Case1

A 63-year-old male had a submucosal tumor of the stomach identified through a regular health check that included an upper gastrointestinal examination. Computed tomography (CT) was performed and a left adrenal tumor was suspected (Fig. 1a). Magnetic resonance imaging (MRI) was performed for detailed examination. T1-weighted imaging (T1WI) showed a well-defined mass in contact with the gastric wall with no obvious fat content (Figs. 1b, 1c). The mass showed high signal intensity on diffusion-weighted imaging (DWI, Fig. 1d). The tumor seemed to be separated from the left ad-

renal gland, but paraganglioma was not ruled out. Posterior view of I-123 MIBG scintigraphy showed normal accumulation in the bilateral adrenal glands and abnormal accumulation in the left upper abdomen (Figs. 2a, 2b, black arrows).

Urinary catecholamine levels were within normal limits, indicating a low likelihood of functioning paraganglioma.

Subepithelial lesions on the upper posterior wall of the gastric body were found via endoscopy. They were difficult to identify in white light ; however, they were confirmed by endoscopic ultrasound (EUS), which showed a hypoechoic mass with internal heterogeneity in the fourth layer (Figs. 2c, 2d).

The patient underwent laparoscopic and endoscopic cooperative surgery (LECS) for tumor resection. The tumor contained bundles of spindle cells. Immunostaining showed positive reactivity for CD117, CD34, and caldesmon, as well as negative reactivity for S-100, leading to a diagnosis of GIST.

The patient received imatinib mesilate 300 mg as postoperative chemotherapy for about 3 years, and showed no recurrence in subsequent examinations.

Corresponding author : Honami Kobiyama, MD. E-mail : h-kiku@fmu.ac.jp

©2024 The Fukushima Society of Medical Science. This article is licensed under a Creative Commons [Attribution-NonCommercial-ShareAlike 4.0 International] license.
<https://creativecommons.org/licenses/by-nc-sa/4.0/>

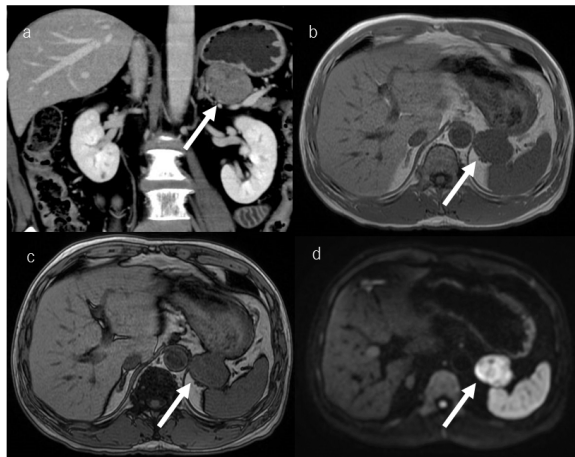


Fig. 1. Coronal image of contrast-enhanced CT (a) showed a tumor near the left adrenal gland (white arrow). In-phase (b) and out-of-phase T1WI (c) showed a well-defined mass in contact with the gastric wall, with no obvious fat content (white arrows). The mass showed high signal intensity DWI (d, white arrow).

Case 2

A 76-year-old female with a medical history of hypertension had abdominal discomfort, loss of appetite, and weight loss. Upper gastrointestinal endoscopy revealed an indentation in the upper part of the gastric body. Abdominal CT showed marked thickening of the gastric wall, suggesting leiomyosarcoma.

For further investigation, contrast-enhanced computed tomography (CECT) was performed and showed a huge mass with internal necrosis in the left upper abdomen (Fig. 3a, white arrows). The tumor was thought to be derived from the gastric serosa or mesentery. The spleen was infiltrated; however, with no enlargement of lymph nodes and a small amount of ascites, neither dissemination nor metastasis was suspected. I-123 MIBG scintigraphy, performed to rule out pheochromocytoma before biopsy, showed a strong accumulation in the lesion on the anterior image (Figs. 3b, 3c, black

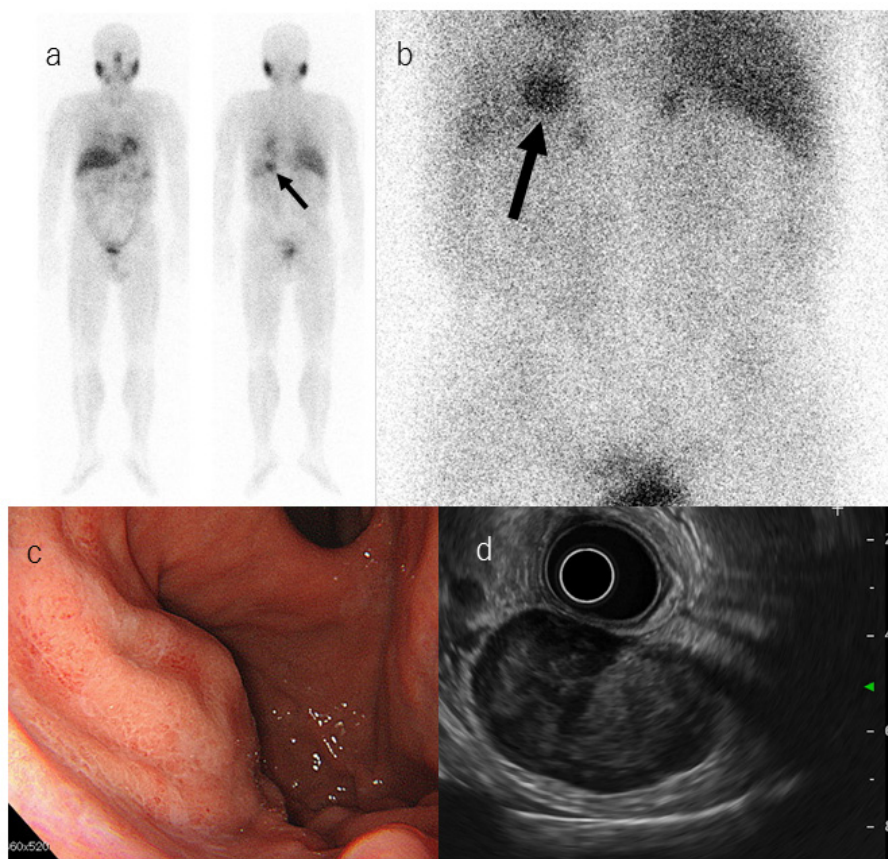


Fig. 2. An abnormal accumulation in the left upper abdomen was observed in I-123 MIBG scintigraphy (a, b, black arrows).

Endoscopic images of subepithelial lesions on the posterior wall of the upper gastric body, confirmed by EUS, which shows a hypoechoic mass with internal heterogeneity in the fourth layer (c, d).

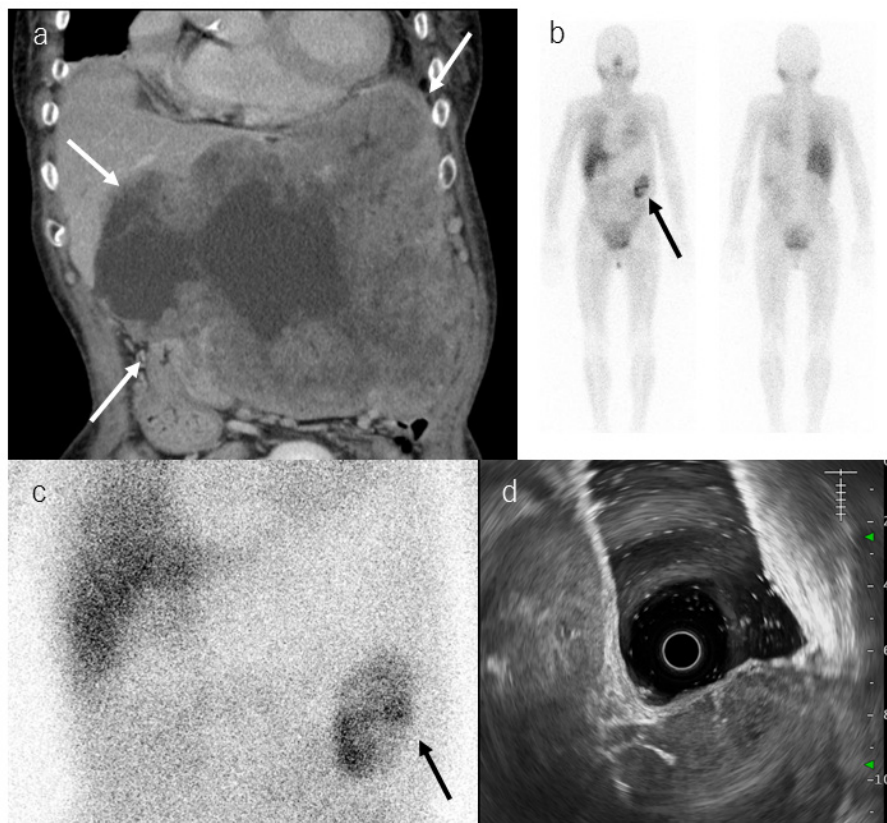


Fig. 3. Coronal contrast-enhanced CT showed a huge mass with internal necrosis in the left upper abdomen (a, white arrows). Anterior image of I-123 MIBG scintigraphy showed a strong but partial accumulation in the mass (b, c, black arrows). The mass was seen outside the gastric wall and hepatic infiltration was suspected by an upper gastrointestinal EUS (d).

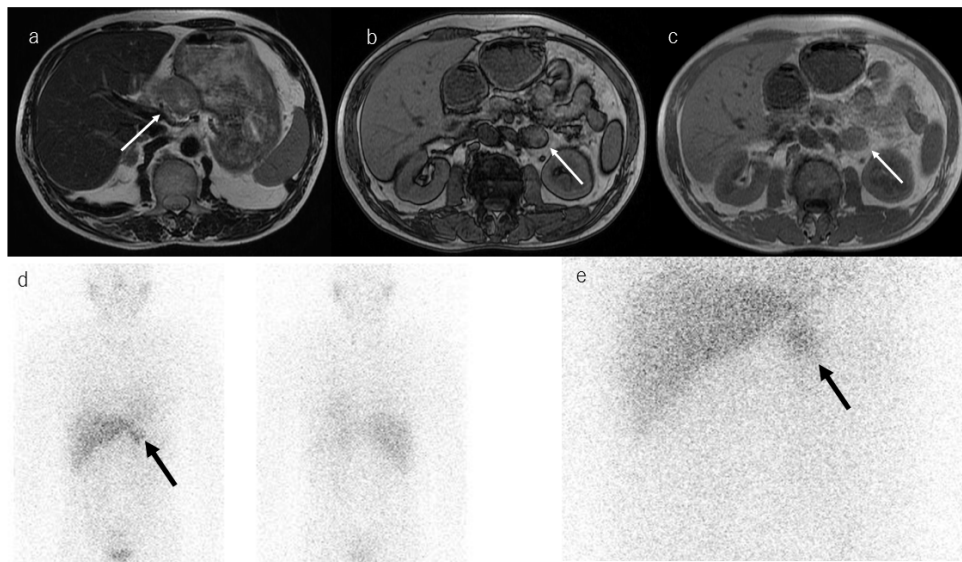


Fig. 4. Axial T2WI showed the gastric tumor with mixed signal intensity (a, white arrow). The bilateral adrenal nodules had lower signal intensity on out-of-phase images (b, white arrow) than in-phase images (c, white arrow), indicating adrenal adenoma (only the left side mass is presented). I-131 MIBG scintigraphy did not show abnormal accumulation in the bilateral adrenal glands, but showed a strong accumulation in the gastric tumor, anterior view (d, e, black arrows).

Table 1. Reported cases and our cases of GIST with MIBG accumulation

| Author and year | Age | Sex | Location | Type of MIBG scintigraphy | Symptoms | Serum catecholamine | Immunostaining |
|------------------------|-----|-----|------------|---------------------------|---|---------------------|---|
| Balan KK (2010) | 45 | F | peritoneum | 123-I | incomplete carney's triad (pheochromocytoma, GIST, absence of pulmonary chondromas) | not mentioned | CD117(+), CD34(+) S-100(-) |
| Fukuchi K (2012) | 70 | F | stomach | 123-I | hypertension | not high enough | CD117(+), CD34(+), vimentin(+), NSE(+), S-100(-), desmin(-), synaptophysin(-), chromograninA(-) |
| Dellen DV (2012) | 60 | M | stomach | 123-I | left hypochondrial pain, hypertension | normal | CD117(+), CD34(+) S-100(-), desmin(-), |
| Bhanthumkomol P (2017) | 52 | F | stomach | 123-I | left flank distress | normal | CD117(+), CD34(+), Dog1(+) S-100(-), desmin(-), |
| Present cases Case1 | 63 | M | stomach | 123-I | no symptoms | normal | CD117(+), CD34(+), caldesmon(+) |
| Case 2 | 76 | F | stomach | 123-I | hypertension, abdominal discomfort, loss of appetite, weight loss | not high enough | CD117(+), CD34(+), caldesmon(+) S-100(-), desmin(-), |
| Case 3 | 51 | M | stomach | 131-I | no symptoms | normal | CD117(+), CD34(+) S-100(-), desmin(-), SMA(-) |

arrows). Urinalysis and blood tests showed no findings suspicious for a functioning pheochromocytoma.

No tumor exposure or wall thickening was observed via endoscopy with normal light but an extensive mass with necrosis was observed outside the gastric wall, and suspected hepatic infiltration was detected via an upper gastrointestinal endoscopic ultrasound (EUS, Fig. 3d). EUS-guided fine needle aspiration (EUS-FNA) was also performed, and showed spindle cells. Immunostaining showed positive reactivity for CD117, CD34, and caldesmon, but negative reactivity for desmin and S-100 protein. The pathological diagnosis was GIST.

Since the tumor was large and infiltration of surrounding organs was observed, it was decided to operate after chemotherapy. Initially, the tumor showed a tendency to shrink by imatinib mesilate 300 mg, but one nodule of the tumor increased in size. Treatment was continued by changing to sunitinib, but the tumor was enlarged. The patient died after 3 years in palliative care.

Case 3

A 51-year-old male was found to have a small gastric submucosal tumor by endoscopy at his previous hospital, and was followed by observation. Four years later, the tumor increased in size, and GIST was suspected by CT.

CT showed a tumor protruding outside the lateral wall of the gastric lesser curvature and bilateral adrenal nodules were noted. MRI and I-131 MIBG

scintigraphy were performed to rule out pheochromocytoma. The gastric tumor had a low signal on T2-weighted imaging (T2WI, Fig. 4a, white arrow) and fatty bilateral adrenal nodules seen on MRI were suspected to be adenoma. Anterior view of I-131 MIBG scintigraphy did not show abnormal accumulation in the bilateral adrenal glands, but a strong accumulation in the gastric tumor (Figs. 4d, 4e, black arrows). EUS revealed a hypoechoic mass with internal heterogeneity in the fourth layer, and the mass was suspected to infiltrate outside of the wall.

EUS-FNA was performed, revealing spindle cells. Immunostaining showed positive reactivity for c-kit and CD34, but negative reactivity for desmin, S-100 protein, and SMA. Pathological diagnosis was gastric GIST. The tumor was considered to be a low-risk GIST because of the small number of mitotic Figs. (50 per high-power field), but it continued to grow, and partial gastrectomy and left adrenalectomy were performed. The size of gastric tumor was 4.5 × 3.6 × 4.5 cm. Since then, there has been no recurrence or metastasis of the GIST, and the right adrenal adenoma has been under observation.

Discussion

MIBG is an analog of noradrenaline and guanethidine, specifically taken up by adrenergic neurons via norepinephrine transporter uptake-1, and stored in catecholamine storage granules in sympathetic nerve terminals and adrenal medullary

cells^{1,2}). GISTs are interstitial tumors derived from interstitial cells of Cajal (ICC) that localize in the intermuscular plexus of the gastrointestinal wall^{2,3}). MIBG scintigraphy is used to diagnose tumors derived from sympathetic nerves such as pheochromocytoma and paraganglioma, or to visualize cardiac sympathetic nerve activity, rather than to diagnose GIST.

MIBG scintigraphy was performed for the purpose of diagnosing or excluding pheochromocytoma in our three cases, and unexpected accumulation of MIBG in GIST was observed. To date, seven cases of GIST with MIBG accumulation including our own have been reported (Table)^{2,4,5,6}. Balan *et al.* reported a patient with a history of pheochromocytoma who was diagnosed with Carney's triad (pheochromocytoma, GIST, and pulmonary chondroma)⁶; however, the other six cases including ours were not associated with Carney's triad and were of gastric GIST. This high frequency of gastric involvement is consistent with that of GIST as mentioned above. Among the seven cases, MIBG accumulation was observed throughout most of the tumors except for our case 2, in which partial tumor accumulation was observed. This might indicate heterogeneity or differentiation of GISTs. Although the exact mechanism of MIBG accumulation in GISTs remains unclear, Fukuchi *et al.* hypothesized two possibilities. First, ICCs have the capability to uptake MIBG². Because ICCs have neuron-like characteristics that mediate neuronal input from the enteric nervous systems, they might have neurosecretory granules that uptake norepinephrine. Second, a special type of GIST called gastrointestinal autonomic nerve tumor (GANT) may be able to uptake MIBG². GANT is known to have bulbous synapse-like structures containing clusters of dense core neurosecretory granules^{7,8}), which may accumulate MIBG². GANTs have been reported to be positive for vimentin, CD34, and NSE in an immunohistochemical study²).

When MIBG accumulates in an abdominal mass suspected to be a GIST, sometimes it is clinically important to differentiate GIST from pheochromocytoma and paraganglioma. Because about 10% of pheochromocytomas and paragangliomas are non-functional tumors and do not present with typical symptoms such as hypertension, palpitations, headache, and sweating⁴), asymptomatic pheochromocytoma

cannot be ruled out.

Although the frequency and exact mechanism of MIBG accumulation in GISTs are yet unknown, several cases of GISTs with MIBG accumulation have been reported, and MIBG scintigraphy may be useful for their diagnosis. However, basic research, case-control studies, and further case collection are needed to elucidate the utility of MIBG imaging for GIST.

Conclusion

MIBG can accumulate in GISTs, although the uptake mechanism remains unclear. When assessing tumors with MIBG accumulation, GIST should be included in the differential diagnosis.

References

1. Guidelines for Clinical Use of Cardiac Nuclear Medicine (JCS 2010). -digest version-. JCS Joint Working Group. *Circ J.* 11-12, 2012
2. Fukuchi K, Suzuki M, Sato S, Iseki J. Unusually increased metaiodobenzylguanidine uptake in a gastrointestinal stromal tumor of the stomach. *Ann Nucl Med*, **26** : 684-687, 2012.
3. Min KW, Leabu M. Interstitial cells of Cajal (ICC) and gastrointestinal stromal tumor (GIST) : facts, speculations, and myths. *J Cell Mol Med*, **10** : 995-1013, 2006.
4. Bhanthumkomol P, Hijioka S, Mizuno N, *et al.* Uptake of ¹²³I-metaiodobenzylguanidine by gastrointestinal stromal tumor. *Clin J Gastroenterol*, **10** : 364-370, 2017.
5. Dellen DV, Mitu-Pretorian OM, Augustine T. Aberrant I-123 MIBG uptake in a gastrointestinal stromal tumour. *Updates Surg*, **65** : 71-76, 2013.
6. Balan KK, Sonoda LI, Pawaroo D, *et al.* I-123 MIBG uptake in a Gastrointestinal Stromal Tumor (GIST). *Clin Nucl Med*, **35** : 196-197, 2010.
7. Kindblom LG, Remotti HE, Aldenborg F, Meis-Kindblom JM. Gastrointestinal pacemaker cell tumor (GIPACT) : gastrointestinal stromal tumors show phenotypic characteristics of the interstitial cells of Cajal. *Am J Pathol*, **152** : 1259-1269, 1998.
8. Debic-Rychter M, Pauwels P, Lasota J, *et al.* Complex genetic alterations in gastrointestinal stromal tumors with autonomic nerve differentiation. *Mod Pathol*, **15** : 692-698, 2002.